



PERFORM WITHIN PROJECT LIMIT LINES

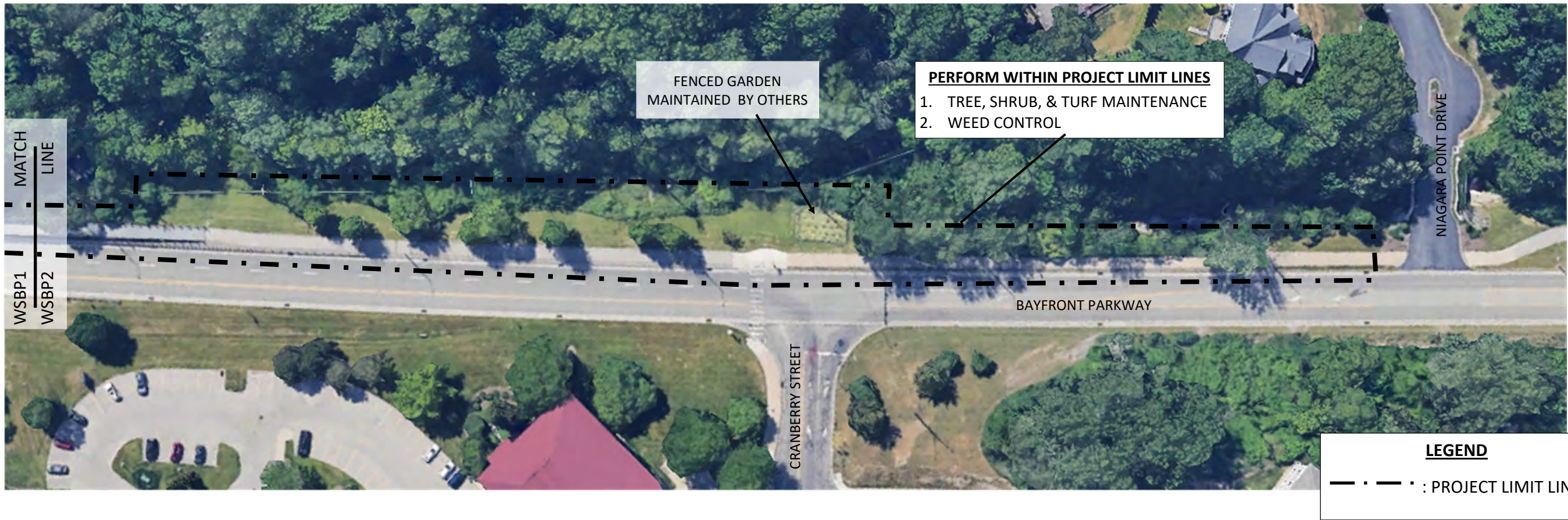
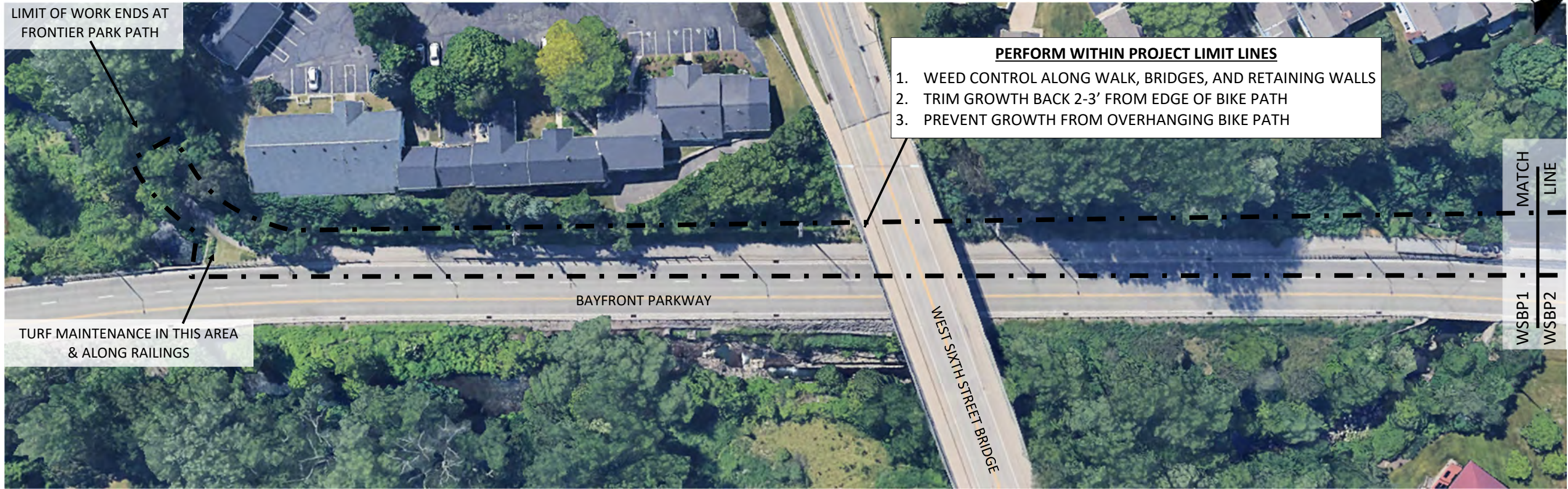
1. TREE, SHRUB, BED, TURF, MAINTENANCE
2. WEED CONTROL
3. MAINTAIN GRAVEL STORM WATER COLLECTION BY REMOVING DEBRIS, WEEDS AND OTHER MATERIAL THAT WOULD INHIBIT PROPER FUNCTION.

LEGEND

--- : PROJECT LIMIT LINE

BAYFRONT LANDSCAPE MAINTENANCE

FIGURE 1
LINCOLN PARK & RIDE



BAYFRONT LANDSCAPE MAINTENANCE

FIGURE 2
WEST SIDE BIKE PATH



- PERFORM WITHIN PROJECT LIMIT LINES**
1. TREE, SHRUB, BED, & TURF MAINTENANCE
 2. WEED CONTROL
 3. IRRIGATION MAINTENANCE

IRRIGATION MAINTENANCE OUTSIDE
OF LIMIT LINES BUT LANDSCAPE
MAINTENANCE BY OTHERS

IRRIGATION CONTROLS BEHIND
NIAGARA PIER GATE

BAYFRONT PARKWAY

NIAGARA PIER



LEGEND

— · — · : PROJECT LIMIT LINE

BAYFRONT LANDSCAPE MAINTENANCE

FIGURE 3
CASCADE CREEK ACCESS

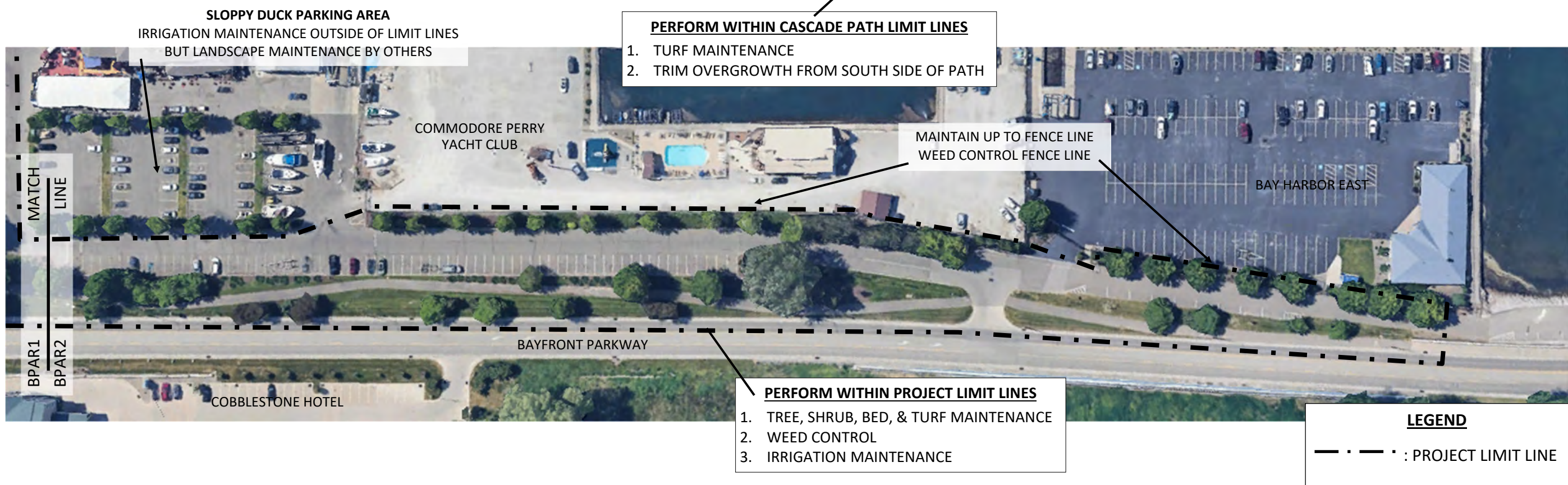
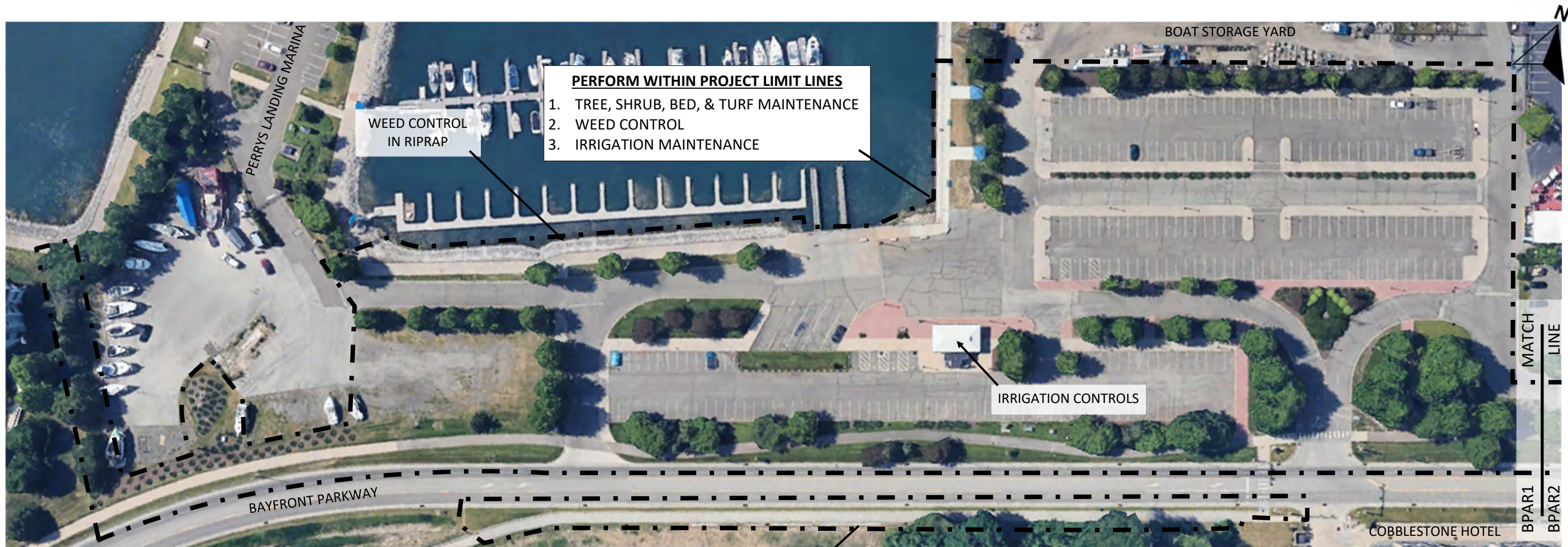


FIGURE 4
BAYFRONT PARK & RIDE,
& CASCADE PATH

BAYFRONT LANDSCAPE MAINTENANCE

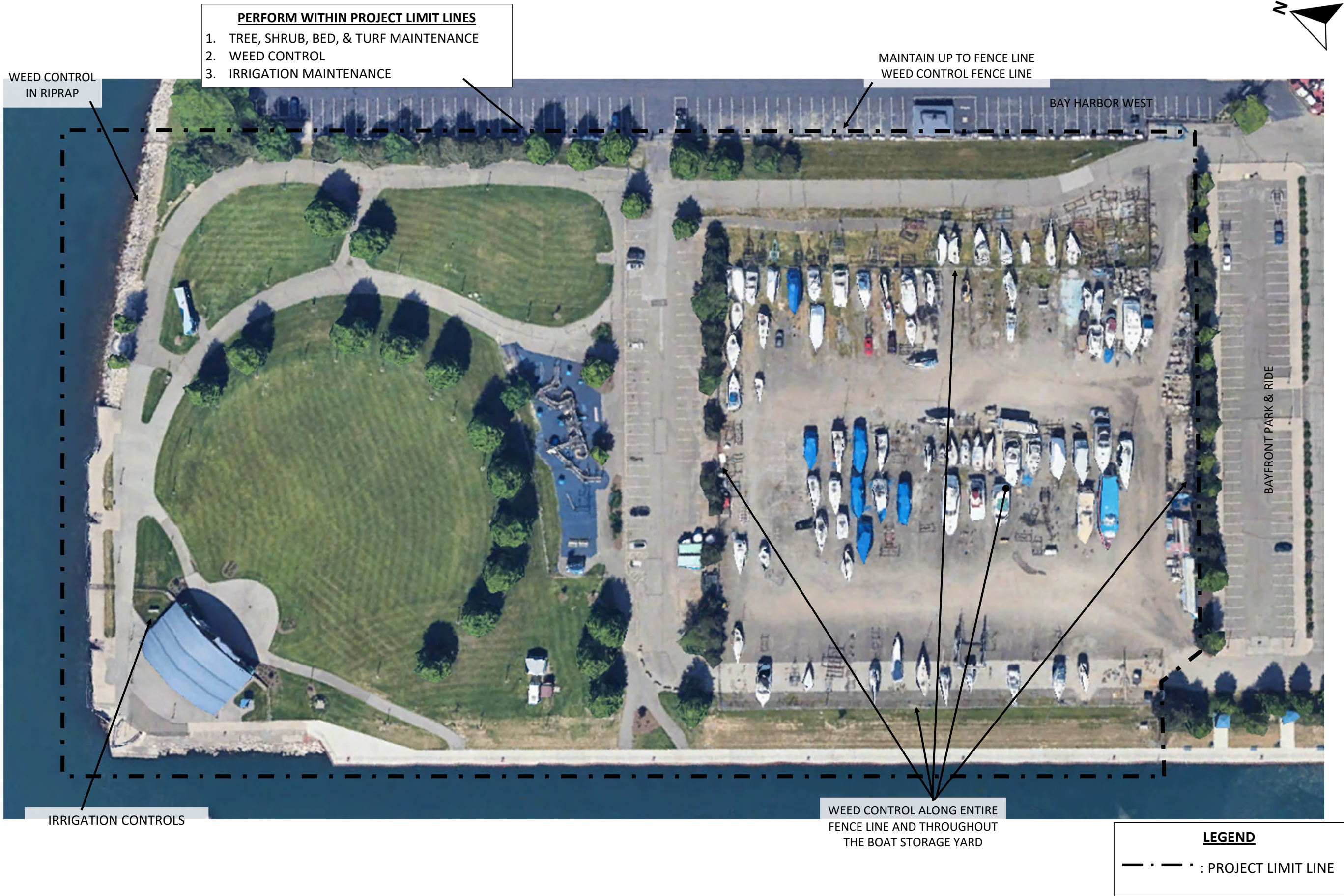


FIGURE 5
LIBERTY PARK

BAYFRONT LANDSCAPE MAINTENANCE

TREE, BED, & SHRUB MAINTENANCE BOTH
SIDES OF PUBLIC ACCESS WALKWAY

ERIE WATER WORKS

PERFORM WITHIN PROJECT LIMIT LINES

- 1. TREE, SHRUB, BED, & TURF MAINTENANCE
- 2. WEED CONTROL

WEED CONTROL
IN RIPRAP

LEGEND

— · — · : PROJECT LIMIT LINE



BAYFRONT LANDSCAPE MAINTENANCE

FIGURE 6
CHESTNUT STREET BOAT LAUNCH

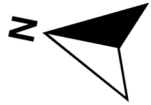


LEGEND

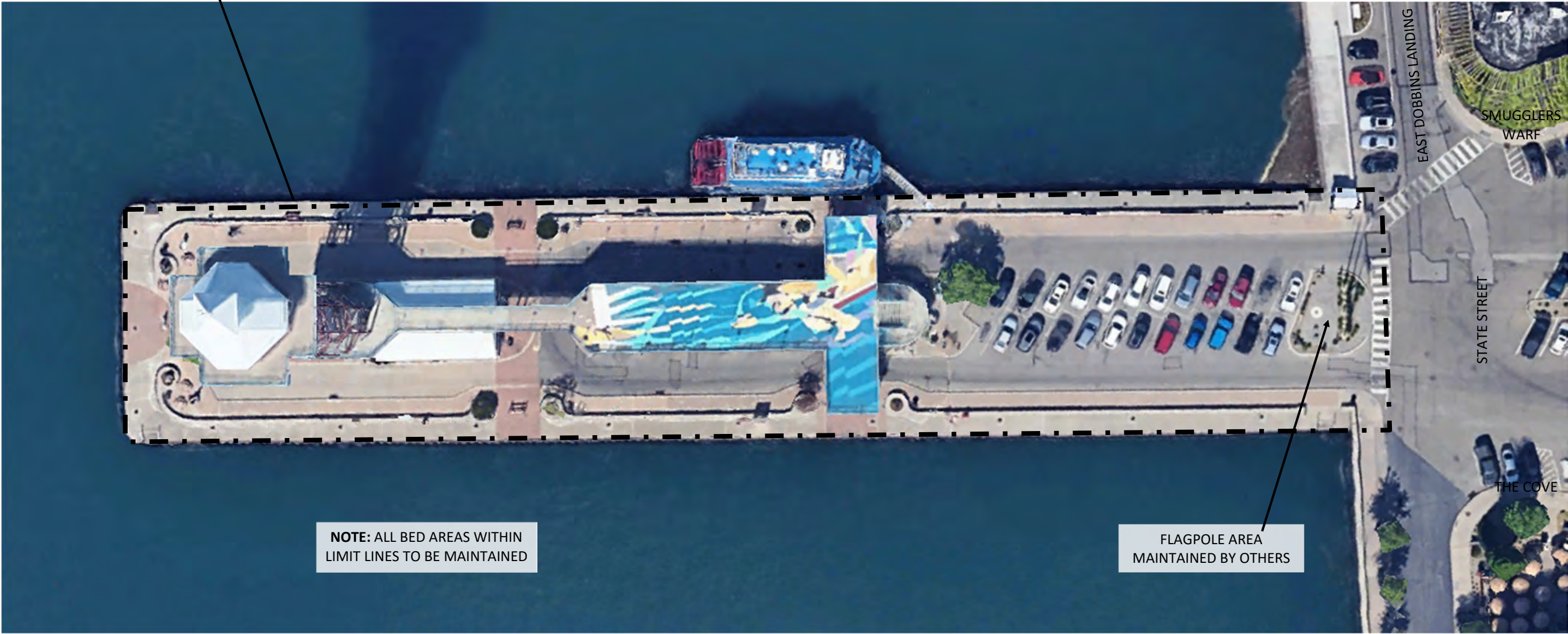
— · — · : PROJECT LIMIT LINE

FIGURE 7
CHESTNUT ACCESS ROAD

BAYFRONT LANDSCAPE MAINTENANCE



- PERFORM WITHIN PROJECT LIMIT LINES**
1. TREE, SHRUB, & BED MAINTENANCE
 2. WEED CONTROL



LEGEND

— · — · : PROJECT LIMIT LINE

FIGURE 8
DOBBINS LANDING

BAYFRONT LANDSCAPE MAINTENANCE



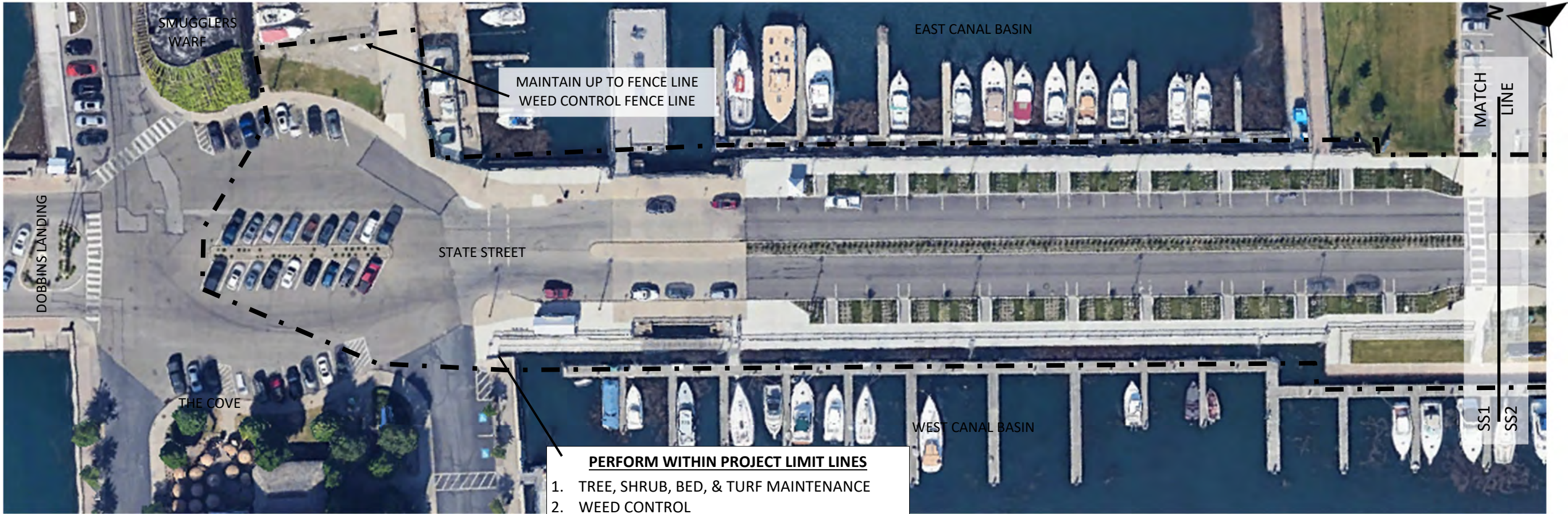
- PERFORM WITHIN PROJECT LIMIT LINES**
- 1. SHRUB & BED MAINTENANCE
 - 2. WEED CONTROL

LEGEND

— · — · : PROJECT LIMIT LINE

BAYFRONT LANDSCAPE MAINTENANCE

FIGURE 9
EAST DOBBINS LANDING



LEGEND

— · — · : PROJECT LIMIT LINE

FIGURE 10
STATE STREET

BAYFRONT LANDSCAPE MAINTENANCE



FIGURE 11
WOLVERINE PARK &
WEST FRONT STREET

BAYFRONT LANDSCAPE MAINTENANCE



FIGURE 12
CRUISE BOAT TERMINAL

BAYFRONT LANDSCAPE MAINTENANCE



FIGURE 13
ORE DOCK SLIP

BAYFRONT LANDSCAPE MAINTENANCE



FIGURE 14A
EAST SIDE BIKE PATH

BAYFRONT LANDSCAPE MAINTENANCE

LEGEND

— · — · : PROJECT LIMIT LINE

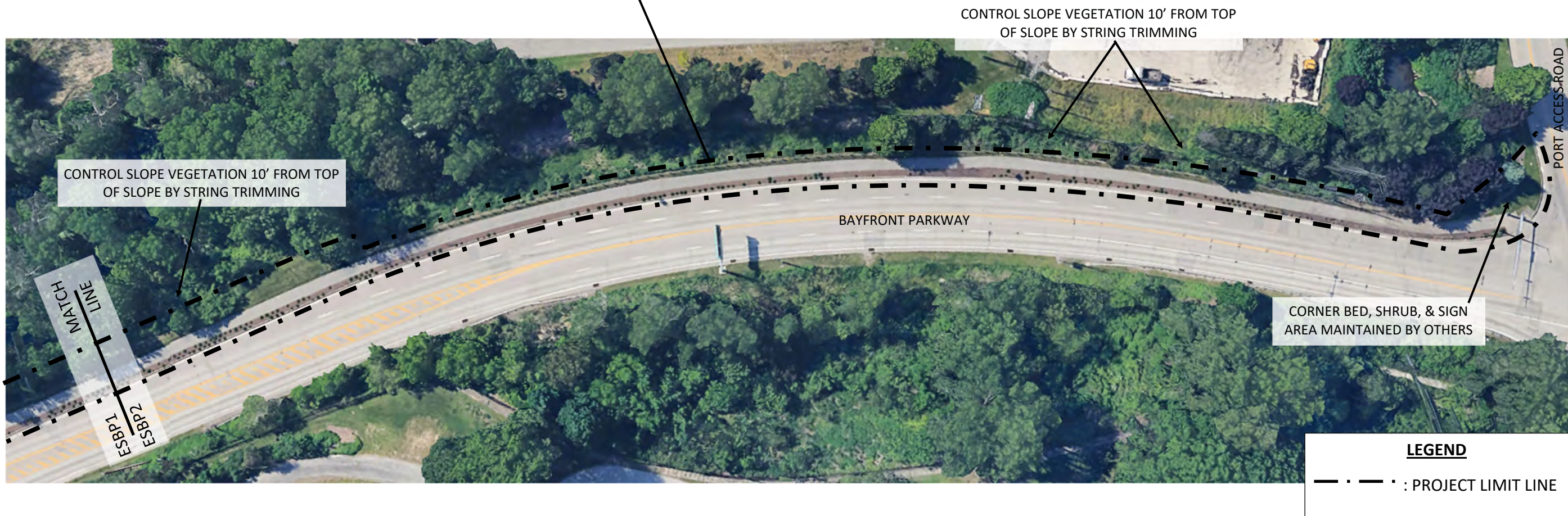
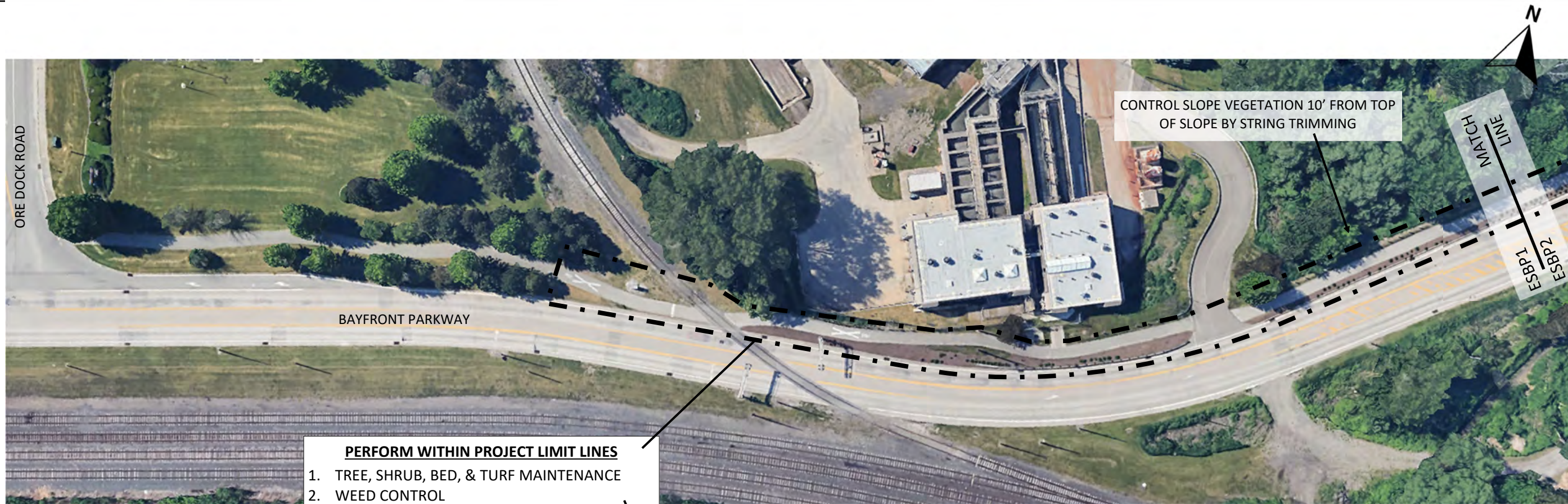
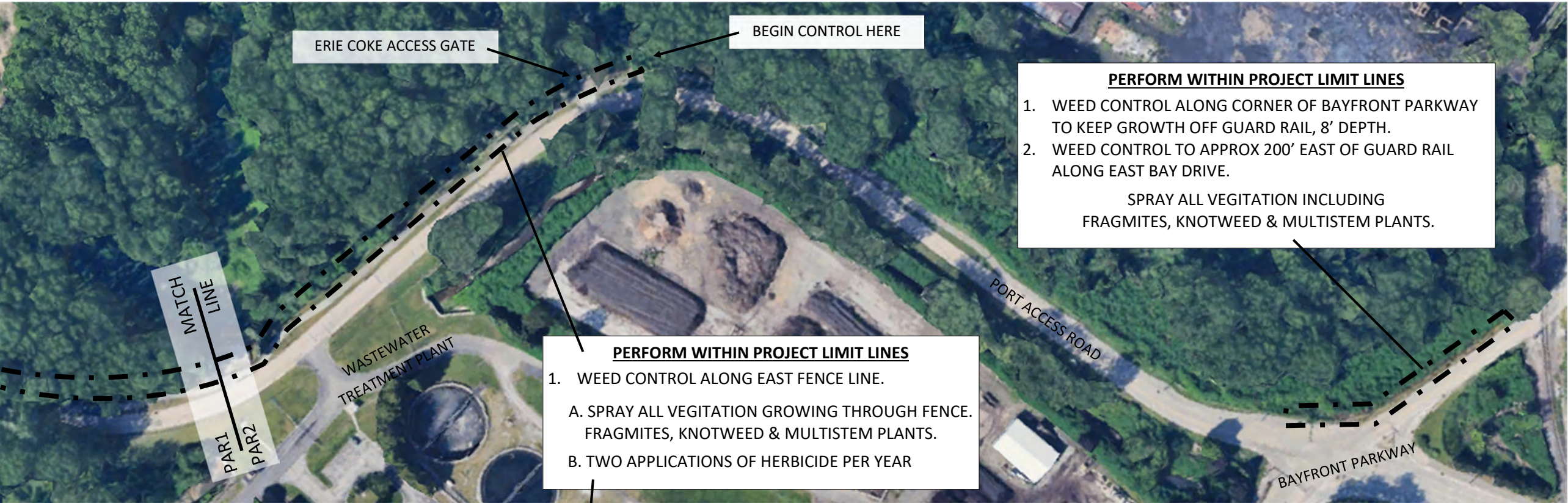


FIGURE 14B
EAST SIDE BIKE PATH

BAYFRONT LANDSCAPE MAINTENANCE



LEGEND

— · — · : PROJECT LIMIT LINE

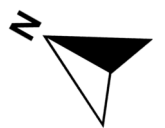


FIGURE 15
PORT ACCESS ROAD

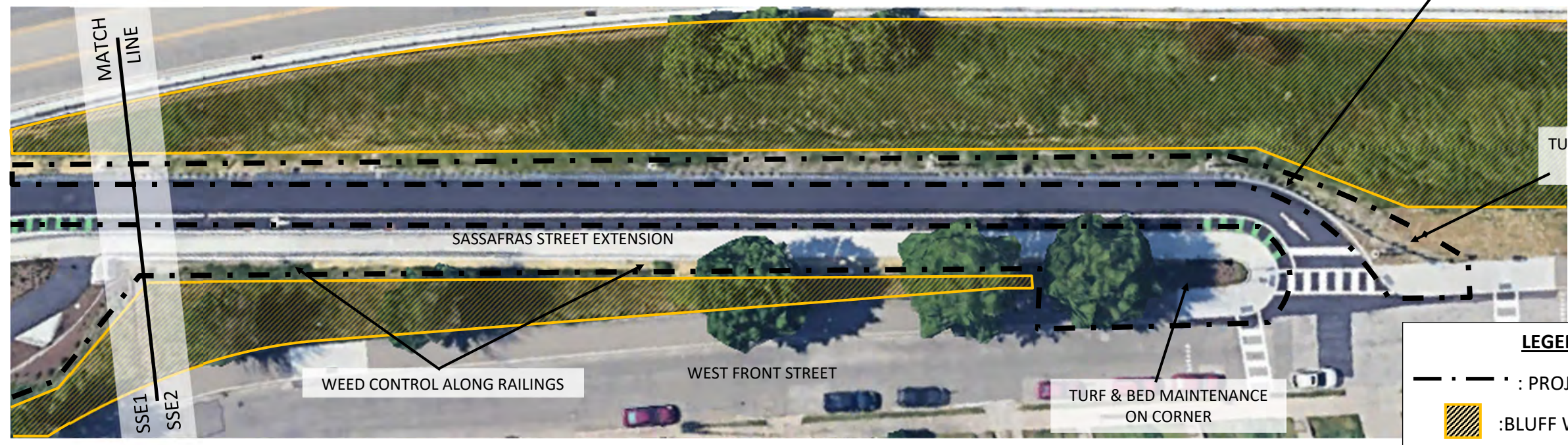
BAYFRONT LANDSCAPE MAINTENANCE



FIGURE 16
SOUTH PIER

BAYFRONT LANDSCAPE MAINTENANCE

- PERFORM WITHIN PROJECT LIMIT LINES**
1. TREE, SHRUB, BED, & TURF MAINTENANCE
 2. GENERAL WEED CONTROL
 3. WEED CONTROL ALONG ALL GUARDRAILS AND RAILINGS. KEEP GROWTH TREATED AND CUT BACK APPROX 4' FROM EDGE.



LEGEND

--- : PROJECT LIMIT LINE

:BLUFF WEED AND FEED (SEE FIGURE B20)

FIGURE 17
SASSAFRAS STREET
EXTENSION

BAYFRONT LANDSCAPE MAINTENANCE

GENERAL NOTES:

PARADE STREET TO HOLLAND STREET: APPROX 80,000 SQ FT

LIMIT OF WORK IS FROM SOUTH OF RAILROAD TRACKS TO THE
PROMENADE WALKWAY, FROM HOLLAND STREET TO THE EAST
SIDE OF PARADE STREET OVERLOOK

DO NOT SPRAY DAYLILY OR WILDFLOWER SWATHS



PERFORM WITHIN PROJECT LIMIT LINES

1. SPRAY FOR BREADLEAF WEEDS, WOODY VEGETATION, PHRAGMITES, VINES, & INVASIVE SPECIES
2. SELECTIVE HERBICIDE TO BE APPLIED TO PROMENADE/BIKE PATH AREA FOR NO MOW ZONE
3. CUT AND TREAT STUMP REGROTH
4. FERTILIZE ALL LAWN GROWTH

GARDEN AND TURF AREA
DO NOT SPRAY
MAINTAINED BY OTHERS

LEGEND

— · — · : PROJECT LIMIT LINE

**BAYFRONT LANDSCAPE MAINTENANCE
BLUFF WEED AND FEED**

FIGURE B18
PARADE STREET TO
HOLLAND STREET

GENERAL NOTES:

PEACH STREET TO SASSAFRAS STREET EXTENSION: APPROX 68,000 SQ FT

LIMIT OF WORK IS FROM THE BAYFRONT PARKWAY TO THE PROMENADE
WALKWAY, FROM PEACH STREET TO SASSAFRAS STREET EXTENSION

DO NOT SPRAY DAYLILY OR WILDFLOWER SWATHS



PERFORM WITHIN PROJECT LIMIT LINES

1. SPRAY FOR BREADLEAF WEEDS, WOODY VEGETATION, PHRAGMITES, VINES, & INVASIVE SPECIES
2. SELECTIVE HERBICIDE TO BE APPLIED TO PROMENADE/BIKE PATH AREA FOR NO MOW ZONE
3. CUT AND TREAT STUMP REGROTH
4. FERTILIZE ALL LAWN GROWTH

LEGEND

— · — · : PROJECT LIMIT LINE

**BAYFRONT LANDSCAPE MAINTENANCE
BLUFF WEED AND FEED**

FIGURE B19
PEACH STREET TO
SASSAFRAS STREET EXTENSION

GENERAL NOTES:

SASSAFRAS STREET EXTENSION TO ERIE WATER WORKS: APPROX 42,000 SQ FT

LIMIT OF WORK IS FROM THE BAYFRONT PARKWAY TO THE PROMENADE WALKWAY, FROM SASSAFRAS STREET EXTENSION TO ERIE WATER WORKS

DO NOT SPRAY DAYLILY OR WILDFLOWER SWATHS



- PERFORM WITHIN PROJECT LIMIT LINES**
- 1. SPRAY FOR BREADLEAF WEEDS, WOODY VEGETATION, PHRAGMITES, VINES, & INVASIVE SPECIES
 - 2. SELECTIVE HERBICIDE TO BE APPLIED TO PROMENADE/BIKE PATH AREA FOR NO MOW ZONE
 - 3. CUT AND TREAT STUMP REGROTH
 - 4. FERTILIZE ALL LAWN GROWTH

LEGEND

— · — · : PROJECT LIMIT LINE

**BAYFRONT LANDSCAPE MAINTENANCE
BLUFF WEED AND FEED**

FIGURE B20
SASSAFRAS EXTENSION TO
ERIE WATER WORKS

GENERAL NOTES:

CHESTNUT STREET TO CHERRY STREET: APPROX 173,000 SQ FT

LIMIT OF WORK IS FROM THE BAYFRONT PARKWAY TO THE PROMENADE
WALKWAY, FROM CHESTNUT STREET TO CHERRY STREET

DO NOT SPRAY DAYLILY OR WILDFLOWER SWATHS



PERFORM WITHIN PROJECT LIMIT LINES

1. SPRAY FOR BREADLEAF WEEDS, WOODY VEGETATION, PHRAGMITES, VINES, & INVASIVE SPECIES
2. SELECTIVE HERBICIDE TO BE APPLIED TO PROMENADE/BIKE PATH AREA FOR NO MOW ZONE
3. CUT AND TREAT STUMP REGROTH
4. FERTILIZE ALL LAWN GROWTH

LEGEND

— · — · : PROJECT LIMIT LINE

**BAYFRONT LANDSCAPE MAINTENANCE
BLUFF WEED AND FEED**

FIGURE B21
CHESTNUT STREET TO
CHERRY STREET

GENERAL NOTES:

CHERRY STREET TO POPLAR STREET: APPROX 75,000 SQ FT

LIMIT OF WORK IS FROM THE BAYFRONT PARKWAY TO THE PROMENADE
WALKWAY, FROM CHERRY STREET TO POPLAR STREET

DO NOT SPRAY DAYLILY OR WILDFLOWER SWATHS



PERFORM WITHIN PROJECT LIMIT LINES

1. SPRAY FOR BREADLEAF WEEDS, WOODY VEGETATION, PHRAGMITES, VINES, & INVASIVE SPECIES
2. SELECTIVE HERBICIDE TO BE APPLIED TO PROMENADE/BIKE PATH AREA FOR NO MOW ZONE
3. CUT AND TREAT STUMP REGROTH
4. FERTILIZE ALL LAWN GROWTH

LEGEND

— · — · : PROJECT LIMIT LINE

**BAYFRONT LANDSCAPE MAINTENANCE
BLUFF WEED AND FEED**

FIGURE B22
CHERRY STREET TO
POPLAR STREET

GENERAL NOTES:

PLUM STREET TO CASCADE STREET: APPROX 92,000 SQ FT

LIMIT OF WORK IS FROM THE BAYFRONT PARKWAY TO THE TOP OF BLUFF AT THE GRASS LINE, FROM CHERRY STREET TO POPLAR STREET

DO NOT SPRAY DAYLILY OR WILDFLOWER SWATHS



W 2ND & CASCADE

WEED CONTROL:
KEEP GROWTH CLEAR
FROM WALKWAY RAILING

PLUM STREET

WEST FRONT STREET

CASCADE WALKWAY

BAYFRONT PARKWAY

PERFORM WITHIN PROJECT LIMIT LINES

1. SPRAY FOR BREADLEAF WEEDS, WOODY VEGETATION, PHRAGMITES, VINES, & INVASIVE SPECIES
2. SELECTIVE HERBICIDE TO BE APPLIED TO PROMENADE/BIKE PATH AREA FOR NO MOW ZONE
3. CUT AND TREAT STUMP REGROTH
4. FERTILIZE ALL LAWN GROWTH

LEGEND

— · — · : PROJECT LIMIT LINE

**BAYFRONT LANDSCAPE MAINTENANCE
BLUFF WEED AND FEED**

FIGURE B23
PLUM STREET TO
CASCADE STREET